

**SPECIAL ASSEMBLY MEETING
THE CITY AND BOROUGH OF JUNEAU, ALASKA**

March 19, 2020 7:00 PM

Assembly Chambers - Municipal Building
Meeting No. 2020-09 (Informational Meeting)

I. CALL TO ORDER / ROLL CALL

II. APPROVAL OF AGENDA

III. AGENDA TOPICS

A. COVID-19 Update and Actions

IV. PUBLIC PARTICIPATION ON NON-AGENDA ITEMS

V. ADJOURNMENT

ADA accommodations available upon request: Please contact the Clerk's office 72 hours prior to any meeting so arrangements can be made to have a sign language interpreter present or an audiotape containing the Assembly's agenda made available. The Clerk's office telephone number is 586-5278, TDD 586-5351, e-mail: city.clerk@juneau.org

**ASSEMBLY AGENDA/MANAGER'S REPORT
THE CITY AND BOROUGH OF JUNEAU, ALASKA**

COVID-19 Update and Actions

MANAGER'S REPORT:

ATTACHMENTS:

	Description	Upload Date	Type
▣	Incident Briefing ICS 201 (March 19, 2020)	3/19/2020	Cover Memo
▣	Incident Objectives and Strategies	3/19/2020	Exhibit
▣	Incident Level Rubric	3/19/2020	Exhibit

INCIDENT BRIEFING (ICS 201)

1. Incident Name:	2. Incident Number:	3. Date/Time Initiated: Date: _____ Time: _____
-------------------	---------------------	--

4. Map/Sketch (include sketch, showing the total area of operations, the incident site/area, impacted and threatened areas, overflight results, trajectories, impacted shorelines, or other graphics depicting situational status and resource assignment):

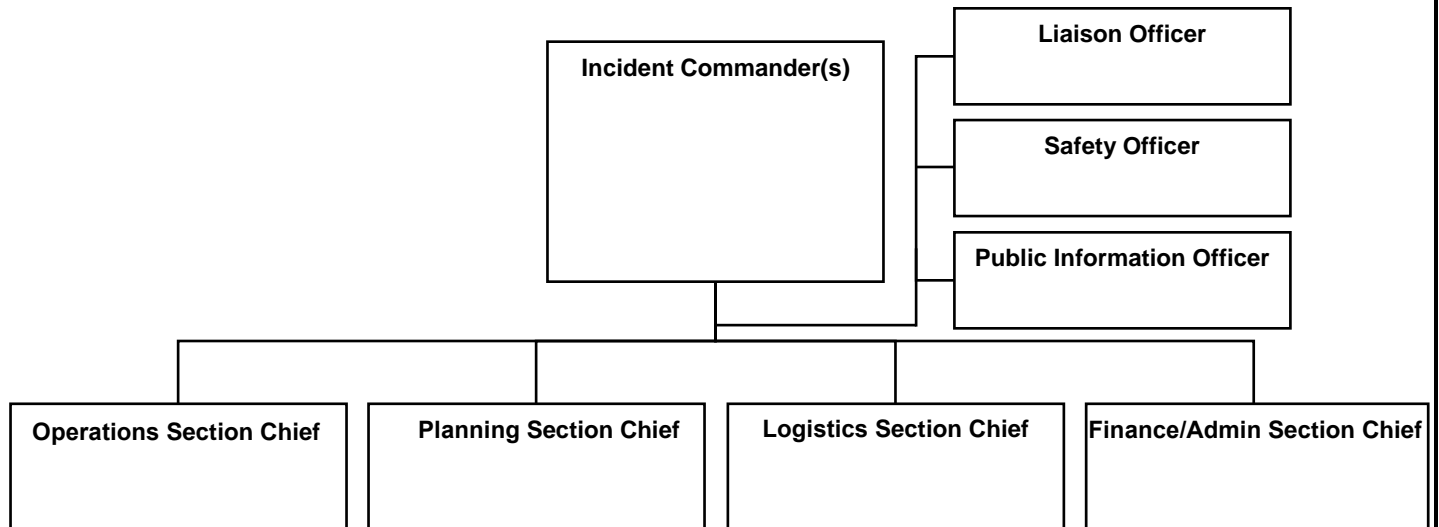
5. Situation Summary and Health and Safety Briefing (for briefings or transfer of command): Recognize potential incident Health and Safety Hazards and develop necessary measures (remove hazard, provide personal protective equipment, warn people of the hazard) to protect responders from those hazards.

6. Prepared by: Name: _____ Position/Title: _____ Signature: _____

INCIDENT BRIEFING (ICS 201)

1. Incident Name:	2. Incident Number:	3. Date/Time Initiated: Date: _____ Time: _____
--------------------------	----------------------------	---

9. Current Organization (fill in additional organization as appropriate):



6. Prepared by: Name: _____ Position/Title: _____ Signature: _____

ICS 201, Page 3 Date/Time: _____

KEY OBJECTIVES:

- A. Mitigate the spread of coronavirus in the community
 - 1 Testing and contact tracing
 - 2 Quarantine of potentially exposed individuals
 - 3 Isolation of sick individuals & use of alternate care facilities appropriate to the event level
 - 4 Social distancing strategies appropriate to the event level

- B. Identify and mitigate economic and social disruption in the community
 - 1 Unified port community message on legal, regulatory and policy impacts for the Cruise ship industry.
 - 2 Assure continuity of supply chain
 - 3 Assure public safety response appropriate to the event level.

- C. Identify and plan for vulnerable populations
 - 1 Address logistical issues with homeless population
 - 2 Address logistical issues with senior & medically fragile
 - 3 Address logistical issues without access to respite care aid
 - 4 Identify tactics to assist community members who are economically vulnerable

- D. Continuity of local government and non-government essential operations as appropriate to event levels
 - 1 Financial impact
 - 2 Staffing impact
 - 3 Operational Availability
 - 4 Volunteer Management

- E. Provide community communication and education as appropriate to event levels
 - 1 Provide information on healthy best practices and State mandates
 - 2 Provide status updates on Juneau health
 - 3 Provide guidance on supply status & best acquisition practices
 - 4 Counter false information with facts
 - 5 Communicate actions individuals can take to assist and support each other

- F. Assure continuity of medical response capabilities

Incident level rubric

Factors	Level 1	Level 2	Level 3	Level 4	Level 5	Recovery
Ability to trace & contain		Contacts are identified and are adhering to quarantine protocols.	Community transmission is identified, containment is uncertain	Community transmission is identified, containment is uncertain	Confident we can't effectively contain community transmission.	Community transmission is under control, limited new cases
Medical Capacity		Beds are open and available at BRH, no mission-critical staffing shortages.	Beds are close or at capacity at BRH, limited mission-critical staffing shortage	Patients are moving to alternate care facilities, moderate staffing shortages, outside medical resources are available.	Triage, medical staff impaired, no outside staffing resources are available.	BRH beds are opening and staff shortages have been mitigated.
Supply Chain	Supply chain is working	Supply chain has delays but most basics available	Supply chain is delayed, some basic resources unavailable	Supply chain impaired, basic resource availability is restricted	Supply chain is no longer operational, basic resources are rationed or unavailable.	Supply chain is working