

Blueprint Downtown Steering Committee Appointments

Planning Commission Meeting
October 30, 2018



Emerging Themes

- Traffic, Transit, and Parking
- Business Vitality and Wellbeing
- Residential Neighborhoods
- Bicycles and Pedestrians
- Design/Identity/Culture/Placemaking
- Family Friendly, Recreation, Open Space
- Downtown Housing
- Carrying Capacity and Seasonal Visitation



The steering committee recommendation was difficult. There were 24 strong applicants. Staff began with a provisional number of 11 spaces to fill based on previous steering committee policy established with the Lemon Creek Plan. To attempt to provide a committee that adequately covered the diverse range of issues and neighborhoods 13 committee members have been recommended.

Staff is also conscious of trying to keep a manageable number to keep the decision making body effective. Staff would like to thank all those who have applied and have encouraged anybody not selected to participate in the planning process. They can still have voices but would not be part of the formal voting process.

The review tried to match applicants stated interests with themes addressed at the kick-off meeting. These broad themes have been validated based on the initial survey feedback received from the public.

Recommended Steering Committee Members

13 Recommended Members:

1. Betsy Brenneman
2. Kirby Day
3. Daniel Glidman
4. Michael Heumann
5. Wayne Jensen
6. Laura Martinson
7. Lily Otsea (Youth Representative)
8. Karena Perry
9. Jill Ramiel
10. Meilani Schivens
11. Patricia Ware
12. Christine Woll
13. Ricardo Worl

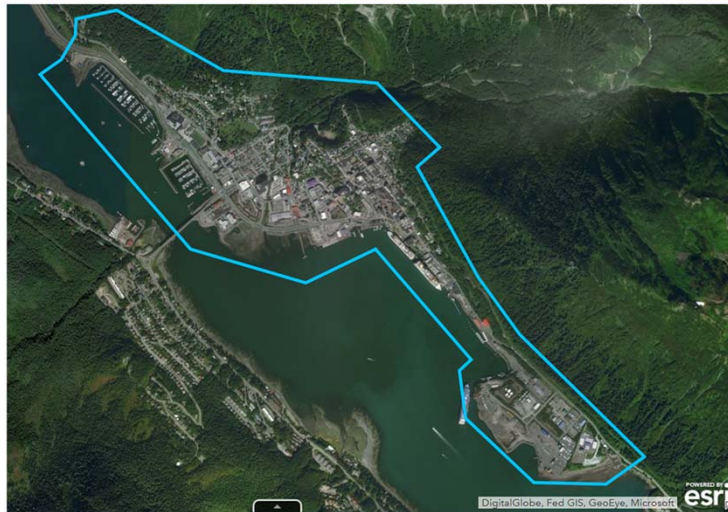


Steering Committee Applicant Matrix

- [Attachment A - Applicant Summary Matrix - Updated - October 12, 2018.pdf](#)



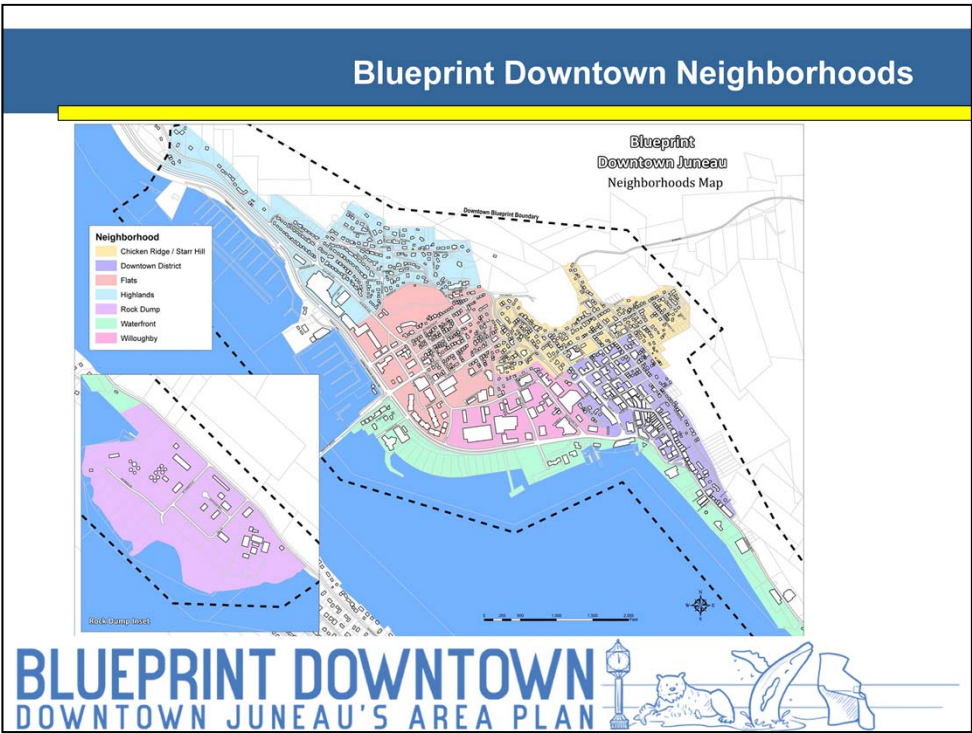
Blueprint Downtown Area of Focus



BLUEPRINT DOWNTOWN
DOWNTOWN JUNEAU'S AREA PLAN



As a reminder the area included in the plan is wide from the Rock Dump to Norway Point.



Attempts were made to get some residential representation from the sub-neighborhoods in downtown through residents, business operators or property owners.

Next Public Meeting



We've been listening to your ideas through meetings, interviews & surveys. Join us at our second Blueprint Downtown public meeting to find out what we're hearing and add your voice to the process!

Attendees are invited to share their ideas and help us to reflect on the data we've gathered.

Blueprint Downtown is a planning effort of the City and Borough of Juneau's Community Development Department, with facilitation by MARY Architects, Lucid Reverse, and Steinberg associates.

CAN'T MAKE THE MEETING? ORGANIZE YOUR OWN "MEETING TO GO" AT [HTTPS://BLUEPRINTDOWNTOWN.ORG](https://blueprintdowntown.org)

OPEN HOUSE
DROP BY ANYTIME!
TUESDAY, OCTOBER 30TH
6:30 P.M. - 8:30 P.M.
@ Elizabeth Peratrovich Hall
320 W. Willoughby Ave.

Tuesday, October 30th
6:30 to 8:30 p.m.
Elizabeth Peratrovich Hall
320 W. Willoughby Avenue

