

# **AGENDA**

## **PARKS AND RECREATION ADVISORY COMMITTEE MEETING**

City Hall Conference Room 224 6:00 PM

October 3, 2017

- I. Call to Order**
- II. Roll Call**
- III. Approval of Agenda**
- IV. Approval of Minutes**
  - A. September 5th, 2017
- V. Public Participation on Non-Agenda Items**
- VI. Unfinished Business**
  - A. Master Plan Update
  - B. Healing Project Discussion
- VII. New Business**
- VIII. Director's Report**
  - A. Downtown Signage Plan Update
  - B. Front Office Tour
  - C. Cope Park Parking Issue
  - D. Snow Removal on the Seawalk
  - E. Savikko Restrooms
  - F. Possible Use of Pioneer Road for Cross Country Skiing
  - G. Flowers in the Egan Median
  - H. Looking at Codes, Ordinances, Regulations and Resolutions
  - I. Treadwell Arena Hours/Budget Issue
  - J. Docks & Harbor Marine Park Plan
- IX. Committee, Liaison, Board Member Reports**
  - A. Chair Report**

**B. Liaison to the Assembly Report**

**C. Liaisons**

**D. Other Partners**

**E. Board Member Comments**

**X. Adjournment**

ADA accommodations available upon request: Please contact the Clerk's office 72 hours prior to any meeting so arrangements can be made to have a sign language interpreter present or an audiotape containing the Assembly's agenda made available. The Clerk's office telephone number is 586-5278, TDD 586-5351, e-mail: [city.clerk@juneau.org](mailto:city.clerk@juneau.org)

**DRAFT MINUTES**  
**PARKS & RECREATION ADVISORY COMMITTEE**

Tuesday, September 5<sup>th</sup>, 2017  
City Hall Chambers – 6 p.m.

**I. Call to Order at 6:00 p.m. – C. Mertl, Chair**

**Present:** B. Farrell, T. Gilmour, C. Mertl, E. Ouderkirk, C. Prussing, T. Rutecki, G. Schaaf

**Absent:** J. Anderson, E. Carrillo

**Staff Present:** Kirk Duncan, P&R Director; Lauren Verrelli, Staff Liaison; Jorden Nigro, ZGYC Facility Manager

**II. Agenda Changes – Approved.**

**III. Public Participation of Non-Agenda Items – None.**

**IV. Approval of Meeting Minutes from July 11<sup>th</sup>, 2017 – C. Mertl makes one edit; B. Farrell moves to approve the minutes, no objection. *Minutes adopted.***

**V. New Business –**

**A. Zach Gordon Youth Center Presentation:**

J. Nigro: Our mission is connecting youth and engaging community. Our programs include a drop in youth center, youth wellness center, summer and spring break camps, youth outreach and support, BAM Afterschool Program and Youth Employment in the Parks (YEP). Our drop in center is for youth up to age 19 which offers fun activities and healthy food is always available. Through partnerships, the wellness center provides parenting classes, cultural activities, homework tutoring and other engaging activities to support youth. The Outreach Coordinator is funded in part by the Juneau Community Foundation and it refers youth to housing/shelter services, behavioral health, food stability, etc. The BAM Afterschool program is at both middle schools and serves 25% of all middle school students and relies on partner organizations and volunteers. YEP is a partnership with Southeast Alaska Independent Living (SAIL) and the Dept. of Labor which serves youth ages 16-20 with a disability. They are a crew of about 10 who work 7 hour work days in the parks four days a week during the summer and then 4 hours on the 5<sup>th</sup> day on job readiness skill development.

G. Schaaf: What is one thing you really wish you had that you don't have?

J. Nigro: We would really like to soundproof the racquetball court within the center. It's very loud and it is now used more for basketball which carries throughout the center.

C. Mertl: Do you feel that you're adequately staffed?

J. Nigro: Yes, I do feel we are now. If we continue to grow, we will need more.

**B. Docks & Harbor Marine Park to Taku Fisheries Design Plan:**

K. Duncan: Docks & Harbor is working on creating an urban design from Marine Park out to the Taku Fisheries to provide direction for future uses and development of public and privately owned tidelands. Now that the cruise ships are docked on the new docks and not on the actual dock itself, this gives us lots of space to work with. They're not looking at doing anything different around Marine Park to the MPG but develop from the MPG to Taku Fisheries.

C. Mertl: We're looking at developing a master plan and creating some sort of urban planning project that unifies our waterfront. We're just starting the project. D&H number one priority is parks and open space and create a year round destination area.

**C. Recreational Camping:**

K. Duncan: We don't have any recreational camping as a department. People can camp in our parks given certain guidelines. I think we should offer certain campsites in certain locations that we manage that we charge for. We could offer some campsites on our land that we control that would generate enough revenue that would cover the cost to manage it. Some potential places are Eagle Valley Center, Outer Point, Brotherhood Bridge.

G. Schaaf: We do have areas where people are camping pretty heavily and there is a lot of resource damage over time. Generally, regulation wise, camping in parks is confusing. Offering formal and established campgrounds with set regulations is a way to fix that.

E. Ouder Kirk: RV camping is pretty saturated here. Juneau would be better served at looking at a cabin program than a tent-platform program.

K. Duncan: This will come up in the master plan; ultimately there is some potential here.

**D. Homelessness Camping Update:**

K. Duncan: I want to clarify the article that was in the Juneau Empire; the City Manager asked the Lands Manager to compile a list of flat spots within the community that are physically available to use for a homeless campground. There was a list of 16 sites that has been narrowed down to 6. The only ones that we would be concerned with is Cope Park but I can't imagine that to stay on the list for long.

T. Gilmour: Have we engaged with the homeless and asked them where they want to go? If we build this, will they come?

K. Duncan: We as a City are having that conversation, we're involved in many different ways.

C. Prussing: I make a motion that PRAC communicates through the Parks & Rec Director opposition to the idea of a homeless campground in Cope Park.

*Unanimous consent. Motion passes.*

**VI. Director's Report – K. Duncan****A. 10<sup>th</sup> to Main DOT Project:**

K. Duncan: DOT is proposing redesign from 10<sup>th</sup> to Main St.; the median is going to remain on Egan and Parks & Rec is recommending continuing mowing the median but not including the flowers. We feel we can use our staff elsewhere, more effectively and efficiently. This is just an information item at this point as the timing on this project is somewhat unknown.

**B. Christopher Trail/Cope Park:**

K. Duncan: The Christopher Trail at Cope Park that parallels the river has a section that is washing out. There isn't anything we can really do about it without being liable for other damages. What we're looking at is rerouting the trail; (*see attached Map*) there's Option A adding a new bridge crossing up stream, Option B adding a bridge crossing by the parking lot or Option C that would not cross the stream at all. People at the meeting did not like Option B & C. We're looking at using an old gangway or something inexpensive to fix this.

C. Mertl: I like Option A; it's the cheapest, least trail impact and easiest to get it completed.

**C. Treadwell Arena:**

K. Duncan: Opened successfully; well attended open skates and camps. The schedule has been changed a little with reduced hours.

**D. Day of Play 2017:**

K. Duncan: Had a very successful Day of Play that included ZGYC, Treadwell Arena, Marine Park, both Pools, etc. It was well attended, fun community day.

**E. Project Playground Update:**

K. Duncan: The design period is currently under review. We're using fall and early winter to finalize designs.

**VII. Unfinished Business – None.**

**VIII. Committee, Liaison, and Board Member Reports**

**A. Chair Report—** None.

**B. Liaison to the Assembly Report—** None.

**C. Liaison Reports—**

YAAB— T. Rutecki: Presented Annual Report.

Aquatics— T. Rutecki: Presented Annual Report; Assembly pleased with how things are handled at the pools. The board is looking at different options for the empowered board which sunsets next summer.

Jensen-Olson Arboretum—T. Gilmour: The Arboretum opened the Word Garden at the 10<sup>th</sup> Birthday.

Lands— C. Mertl: Discussed the Egan project.

1% for Art— J. Anderson: None.

Treadwell Arena Board— C. Mertl: None.

JNU Urban Forestry— C. Mertl: None.

Eaglecrest— Vacant.

TrailMix—B. Farrell: None.

Park Foundation— None.

**Other Member Business** – None.

**Adjournment – 7:31 p.m.** *Having no other business before the board.*

Respectfully submitted by Lauren Verrelli, P&R Administrative Assistant II, 9/18/2017



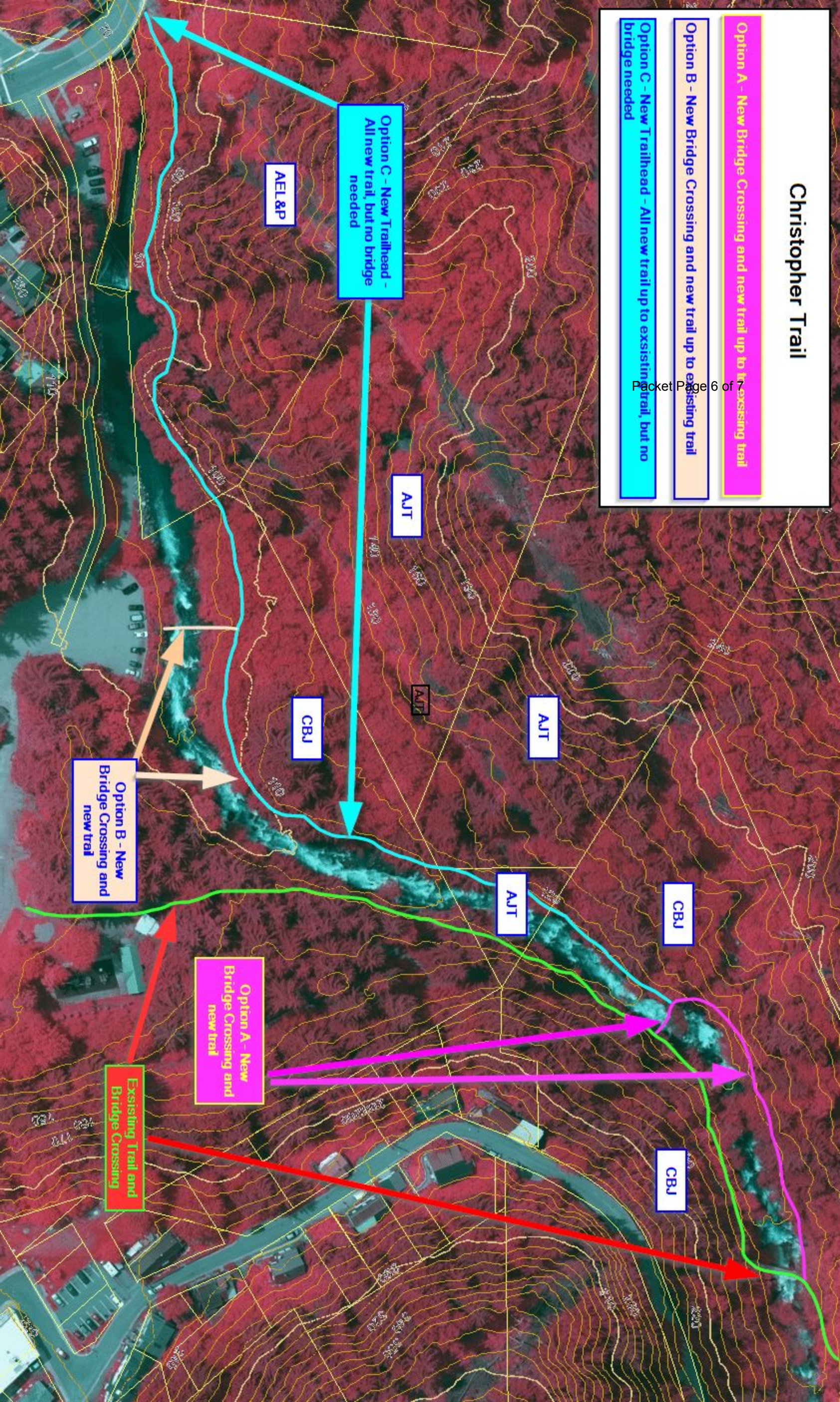
# Christopher Trail

Option A - New Bridge Crossing and new trail up to the existing trail

Option B - New Bridge Crossing and new trail up to existing trail

Option C - New Trailhead - All new trail up to existing trail, but no bridge needed

Packet Page 6 of 7





# Parks & Recreation Master Plan Update – October 2017

## 1. Why do a Plan?

1. Guiding, visionary document
2. Sets direction for Parks & Rec department and our community partners
3. Helps us make decisions today with a view to where we want to be in 10 years
4. Provides a chance to lead a conversation with the community regarding recreation needs and priorities, and to promote recreation as an economic driver

## 2. Timeline

1. Project Planning: spring - fall 2016
2. Public Consultation:
  - Public input: fall 2016
  - What we Heard: fall 2016
3. Inventories:
  - Parks/programs /facilities spring- fall 2017
  - Preliminary recs.: summer/fall 2017
4. Draft Plan:
  - Winter 2018
5. Final Plan:
  - Adoption Summer 2018

## 3. What we Heard

1. Strategy for “ounce of prevention”
2. Highlights from survey
  - Trails
  - Youth
  - Seniors
  - Continue to be affordable
3. Ensuring our partner organizations’ priorities are reflected in our guiding document
4. Value of Parks & Rec to community
5. Managing the expansion of specific uses

## 4. Inventories

1. Programs
  - Additional targeted consultation
2. Facilities
  - Identifying gaps in service
3. Parks
  - Maintenance inventory
  - CIP priorities
  - Land use

## 5. Recommendations

1. Special Committee role and summary of work
  - Mission, vision, guiding principles
2. Categories of recommendations
  - Required
  - Recommended
  - Potential
3. Guiding principles inform goals, which inform recommendations
4. Asset Management
5. Trails and future multi-agency trails plan
6. Fees and charges strategy